

MONTHLY MEMBERSHIP PROGRESS REPORT

LOCATION OHIO

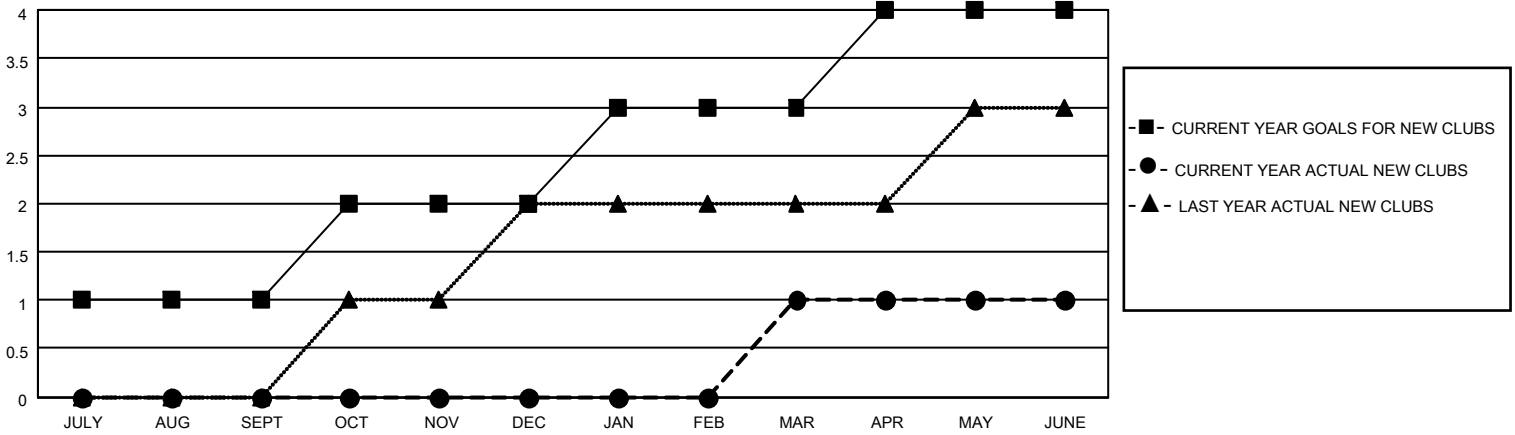
District 13 OH2

Results as of: 6/30/2022

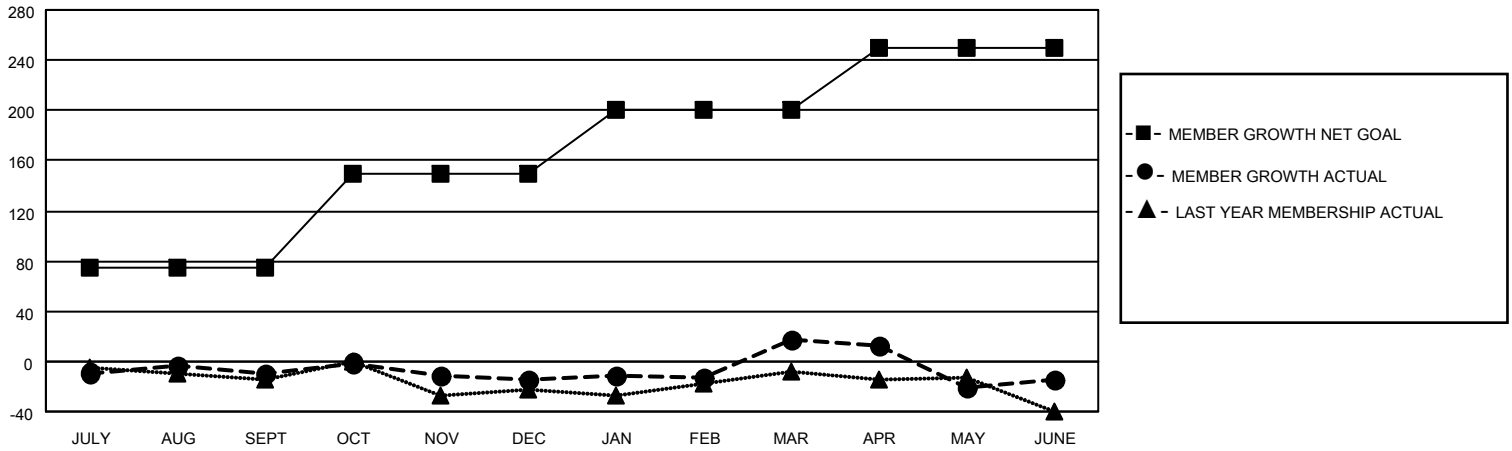
Clubs			
RESULTS FOR 2021-2022			
QUARTER	NEW CLUB GOAL	NEW CLUBS	DROPPED CLUBS
JULY/AUG/SEPT	1	0	2
OCT/NOV/DEC	1	0	0
JAN/FEB/MAR	1	1	0
APR/MAY/JUNE	1	0	0

Members			
RESULTS FOR 2021-2022			
QUARTER	MEMBER GROWTH NET GOAL	MEMBER GROWTH ACTUAL	DROPPED MEMBERS ACTUAL (including transfers)
JULY/AUG/SEPT	75	29	37
OCT/NOV/DEC	75	47	49
JAN/FEB/MAR	50	58	24
APR/MAY/JUNE	50	39	70

GOALS AND ACTUAL NEW CLUBS CUMULATIVE



GOALS AND ACTUAL MEMBERS CUMULATIVE



DROPPED CLUBS: 2

40 CLUBS OF 58 ADDED 1 OR MORE NEW MEMBERS

GENDER DISTRIBUTION

MALE	1,193 (69.20%)
FEMALE	530 (30.74%)
NON BINARY	0 (0.00%)
PREFER NOT TO ANSWER	1 (0.06%)

DROPPED MEMBERS

[CLICK HERE FOR CUMULATIVE MEMBERSHIP DATA](#)

DECEASED	33
CLUB CANCELLED	0
OTHER	147
TOTAL	180

TOTAL FAMILY UNIT MEMBERS	365
FAMILY MEMBERS PAYING HALF DUES	186